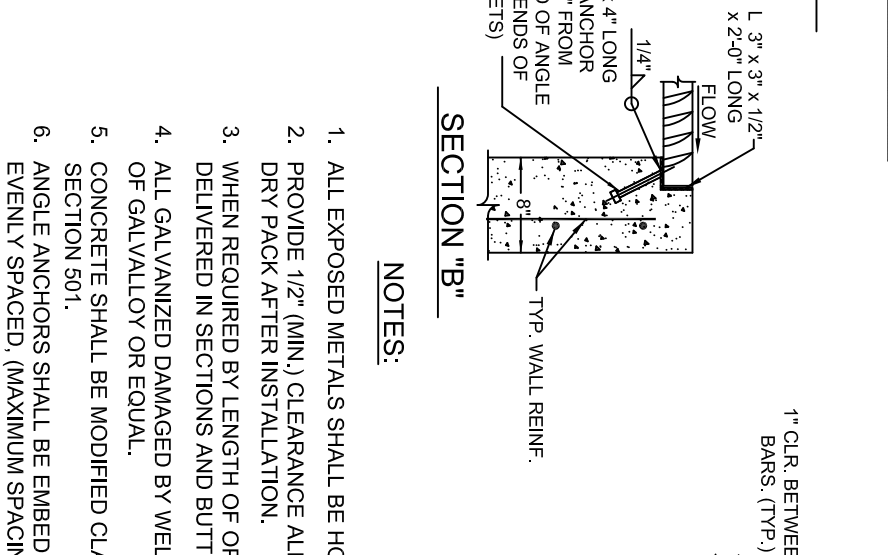
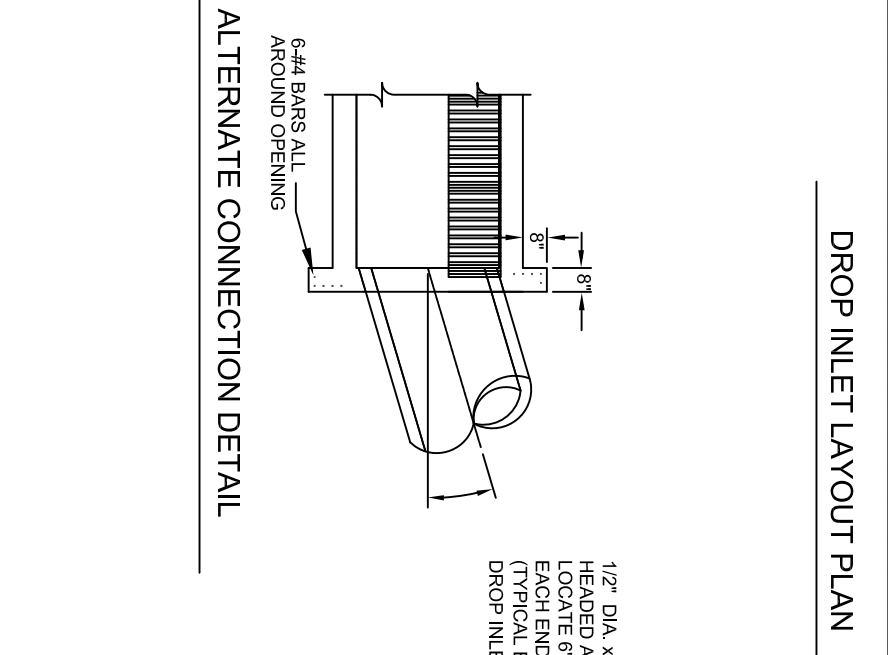
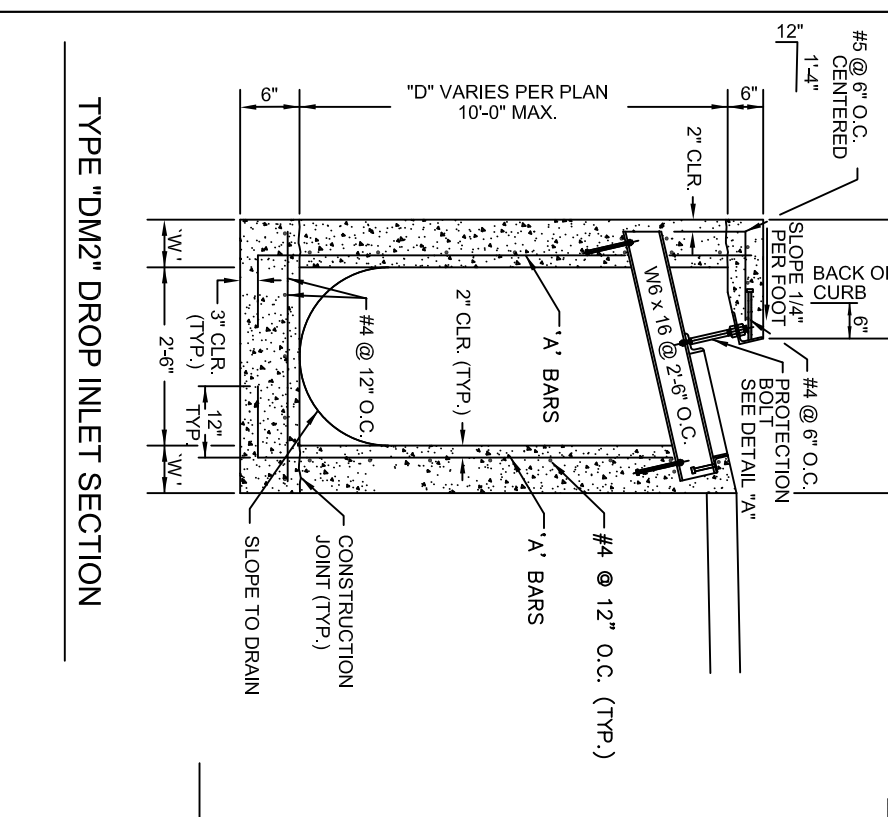
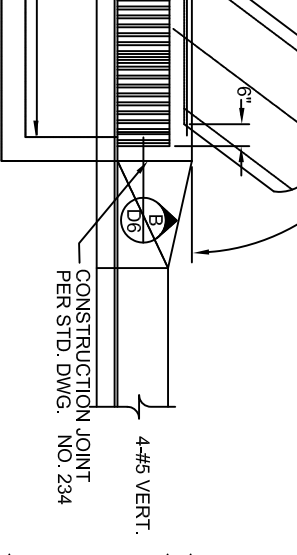
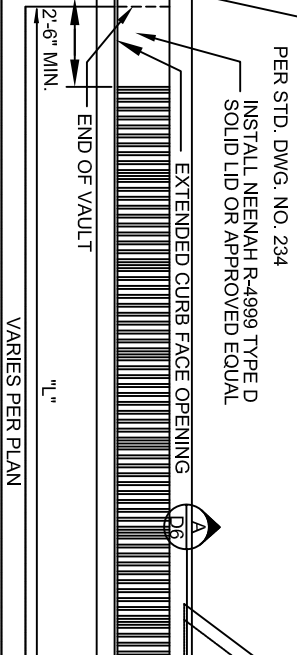
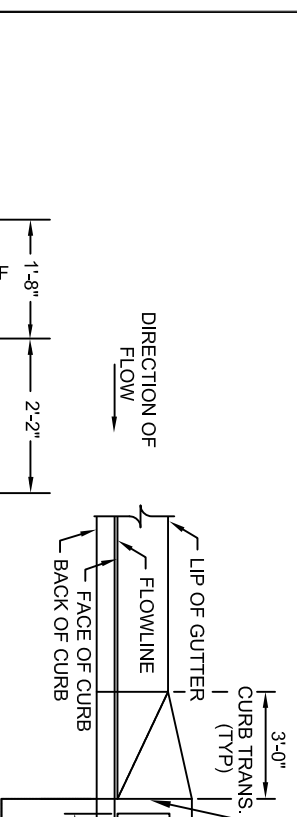


D (MAX)	DIM. 'W'	Ⓐ BARS
4'-0"	6"	#4 @ 12" O.C.
6'-0"	6"	#4 @ 12" O.C.
8'-0"	8"	#5 @ 12" O.C.
10'-0"	8"	#5 @ 6" O.C.



SPECIFICATION REFERENCE	
501	CONCRETE
502	CONCRETE STRUCTURES
505	REINFORCING STEEL
713	STEEL

**UNIFORM STANDARD DRAWINGS
CLARK COUNTY AREA**

TYPE C-D MODIFIED DROP INLET

DATE : 10-9-08 DWG. NO. 412A