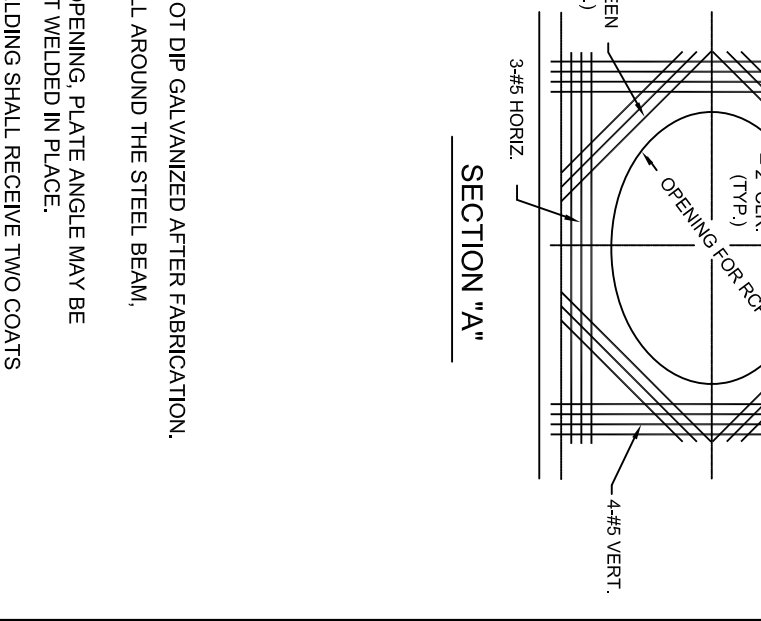
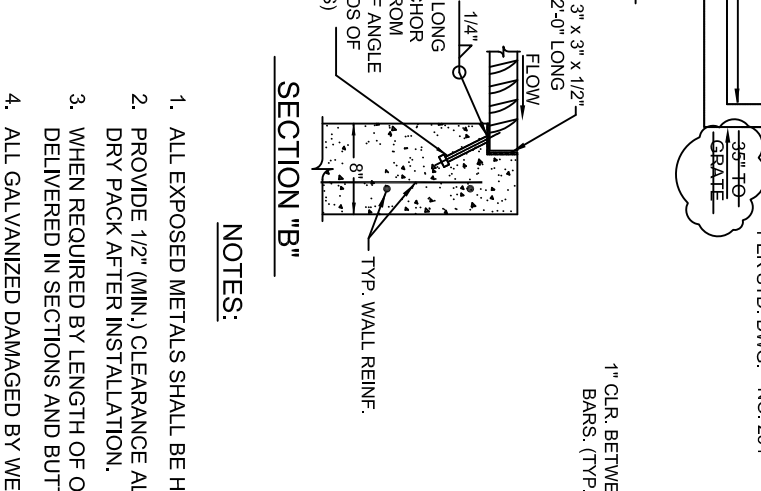
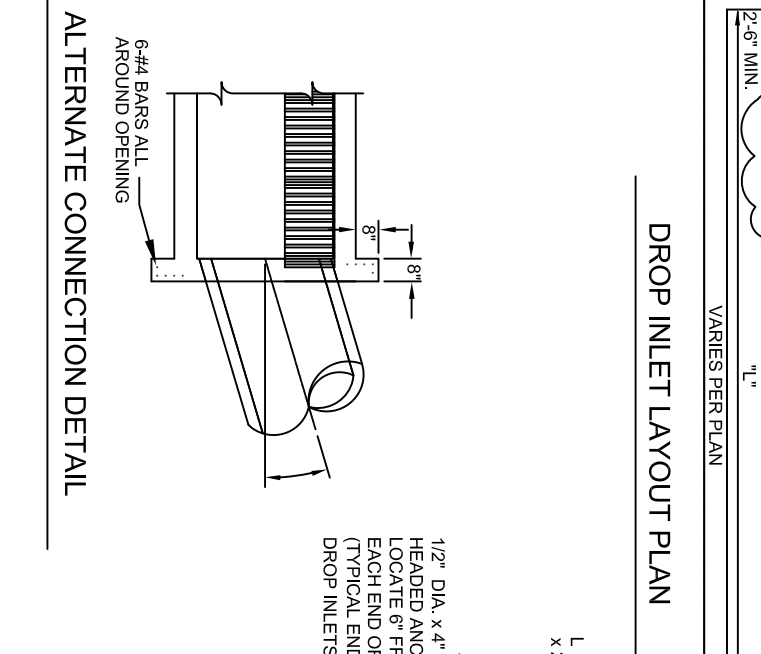
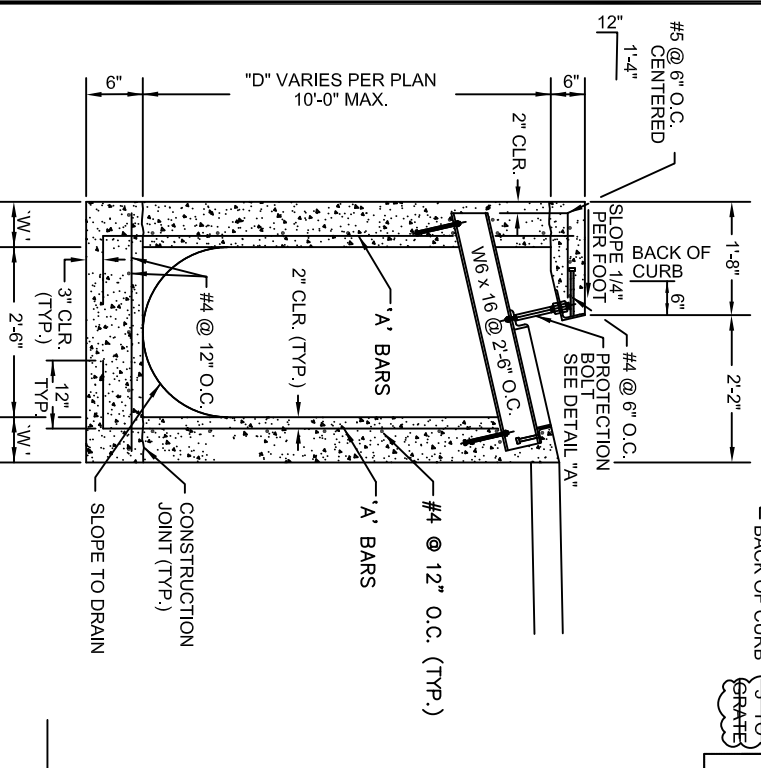
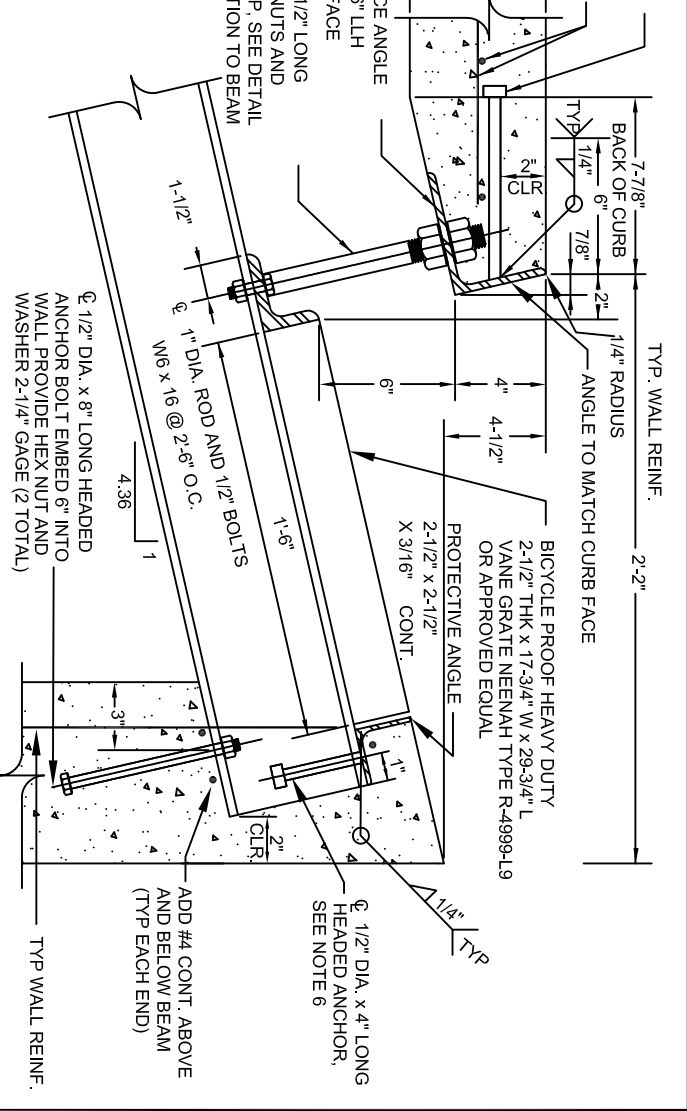


D (MAX)	DIM. 'W'	(A) BARS
4'-0"	6"	#4 @ 12" O.C.
6'-0"	6"	#4 @ 12" O.C.
8'-0"	8"	#5 @ 12" O.C.
10'-0"	8"	#5 @ 6" O.C.



- NOTES:**
1. ALL EXPOSED METALS SHALL BE HOT DIP GALVANIZED AFTER FABRICATION.
 2. PROVIDE 1/2" (MIN.) CLEARANCE ALL AROUND THE STEEL BEAM, DRY PACK AFTER INSTALLATION.
 3. WHEN REQUIRED BY LENGTH OF OPENING, PLATE ANGLE MAY BE DELIVERED IN SECTIONS AND BUTT WELDED IN PLACE.
 4. ALL GALVANIZED DAMAGED BY WELDING SHALL RECEIVE TWO COATS OF GALVALLOY OR EQUAL.
 5. CONCRETE SHALL BE MODIFIED CLASS DA 4000 PSI, SEE SPECIAL PROVISIONS SECTION 501.
 6. ANGLE ANCHORS SHALL BE EMBEDDED MIDPOINT IN EACH ENDWALL AND EVENLY SPACED. (MAXIMUM SPACING OF 2').

TYPE "DM2" DROP INLET SECTION

ALTERNATE CONNECTION DETAIL

DROP INLET LAYOUT PLAN

SECTION "A"

SECTION "B"

SPECIFICATION REFERENCE		UNIFORM STANDARD DRAWINGS CLARK COUNTY AREA	
501	CONCRETE	TYPE C-D MODIFIED DROP INLET	
502	CONCRETE STRUCTURES		
505	REINFORCING STEEL		
713	STEEL		
DATE	DWG. NO. 412A	PAGE NO.	