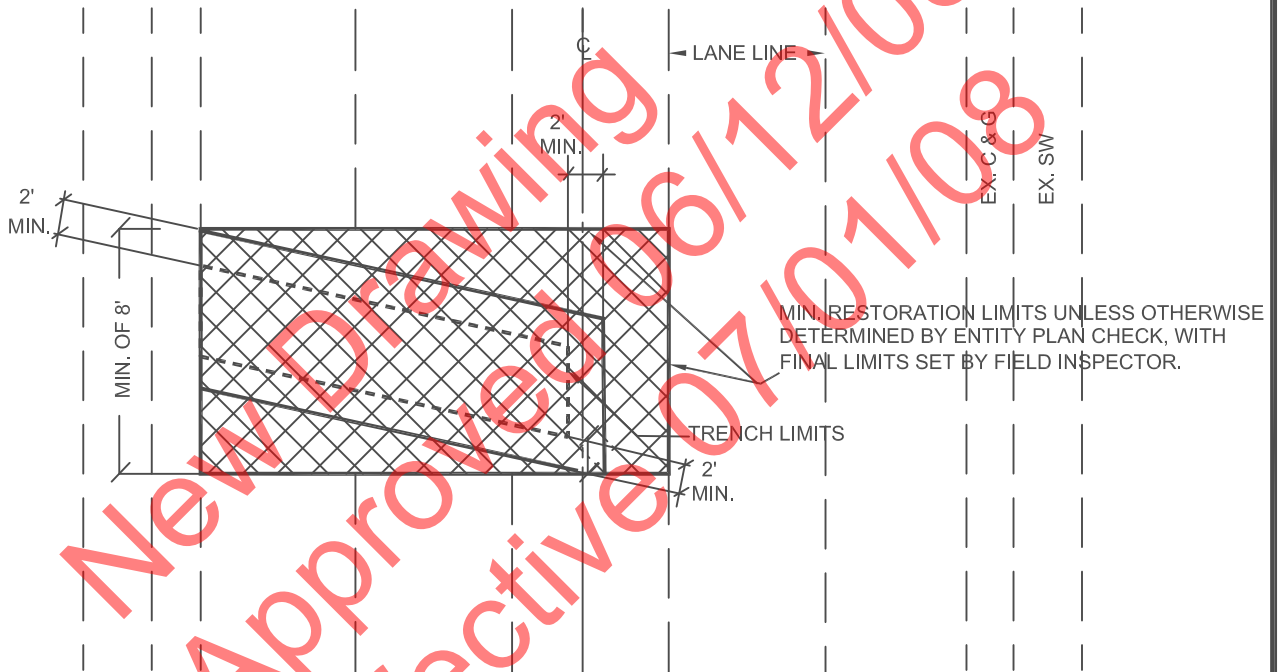


TRANSVERSE CUT RESTORATION



PLAN VIEW

NOTES:

1. IF CUT IS WITHIN A LANE, PAVEMENT RESTORATION MUST EXTEND TO THE NEXT LANE LINE.
2. THE ENTITY'S REQUIREMENTS TAKE PRECEDENCE OVER ANY MINIMUM REQUIREMENTS SHOWN HEREON.

| SPECIFICATION REFERENCE | | UNIFORM STANDARD DRAWINGS CLARK COUNTY AREA | |
|-------------------------|---------------------|--|----------------|
| 302 | AGGREGATE BASE | OVER 5 YEARS PAVEMENT RESTORATION TRANSVERSE CUT ALL R/W WIDTHS | |
| 401 | BITUMINOUS PAVEMENT | | |
| 406 | PRIME COAT | | |
| 407 | FOG SEAL | | |
| 501 | CONCRETE | | |
| | | DATE 6-12-08 | DWG. NO. 500BT |