

Bullhead City Council Meeting

Feb. 3, 2009



Project team members

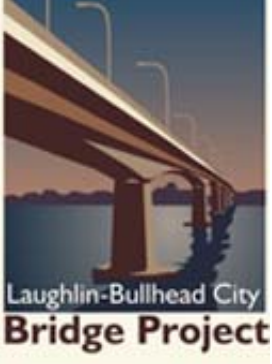
- **Federal Highway Administration**
- **Nevada Department of Transportation**
- **Arizona Department of Transportation**
- **Regional Transportation Commission of Southern NV**
- **Clark County (Laughlin)**
- **Mohave County**
- **City of Bullhead City**



Project purpose

- To provide:
 - Better connectivity between the two communities
 - Better access to and delivery of emergency services
 - Improved service on AZ state route 95
 - An additional crossing for vehicles
 - Accommodations for present and future traffic demand

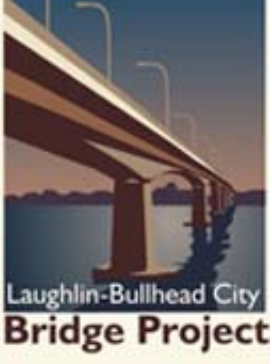




Project need

- Existing and future traffic demand
- Changing land-use patterns and increased growth
- Lack of alternative routes when current bridge has lane closures



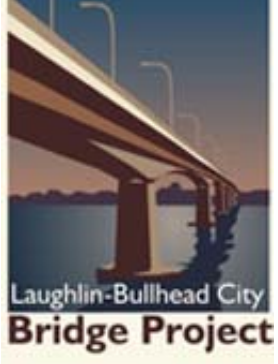


Funding

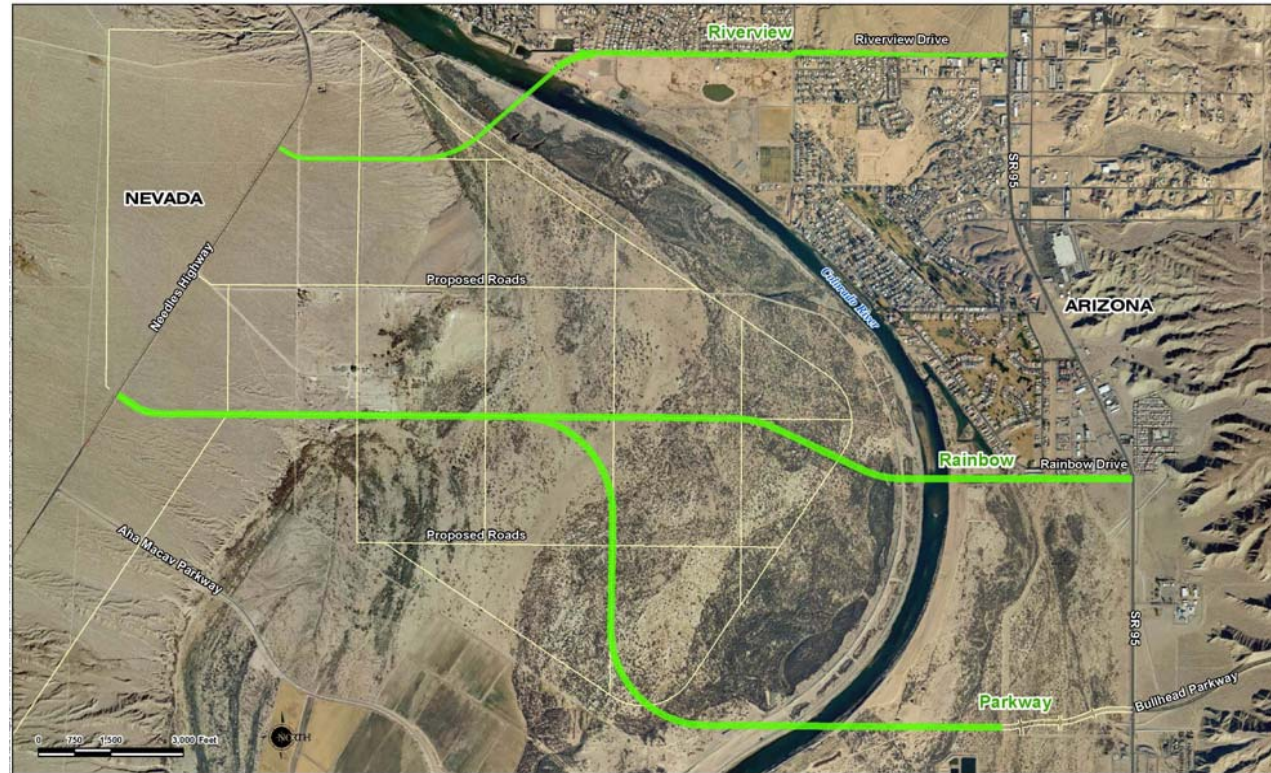
- Project has nearly \$19.3 million in federal funding.
- The total project cost is estimated at ~\$75 million.



Alternatives receiving detailed study in the Environmental Assessment



- Riverview
- Rainbow
- Parkway

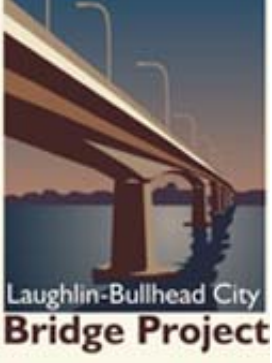


The logo for the Laughlin-Bullhead City Bridge Project. It features a photograph of a bridge structure over water, with the text "Laughlin-Bullhead City" and "Bridge Project" overlaid at the bottom.

Project progress

■ **Activities**

- **Cultural resources survey**
- **Final waters of the US jurisdictional determination**
- **Phase 1 environmental site assessment**
- **Air quality assessment**
- **Noise assessment**

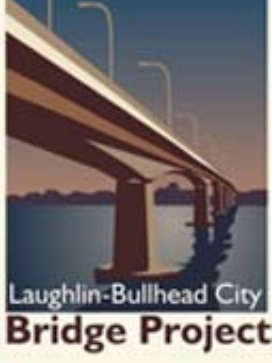


Project progress

■ Meetings / Outreach

- July 18, 2007 (Bullhead City public information meeting)
- July 19, 2007 (Laughlin public information meeting)
- May 28, 2008 (Bullhead City neighborhood meeting)
- Jan. 26, 2008 (Laughlin Town Advisory Board meeting)
- Feb. 5, 2008 (Bullhead City Council meeting)
- Sept. 9, 2008 (Laughlin Town Advisory Board meeting)
- Jan. 27, 2009 (Laughlin town hall meeting)
- Feb. 3, 2009 (Bullhead City Council meeting)

Environmental Assessment



A concise federal document available to the public that provides sufficient evidence and analysis to allow the lead agency to determine whether there will be significant adverse environmental and social impacts.



Environmental Assessment

1. Develop scope
2. Purpose & Need
3. Develop Initial Alternatives
4. Public Information Meetings
5. Develop & Evaluate Alternatives ★
6. Final Document
7. Location / Design Hearings

Rotary Park

Laughlin-Bullhead City
Bridge Project



Tentative project schedule



Planning &
Preliminary
Environmental Work

Environmental
Assessment &
Preliminary
Engineering

Final Design,
Rights-of-Way &
Permitting

Bid Process &
Construction

2004
through
2007

2007
through
2010

2010
through
2011

2010
to
2013

