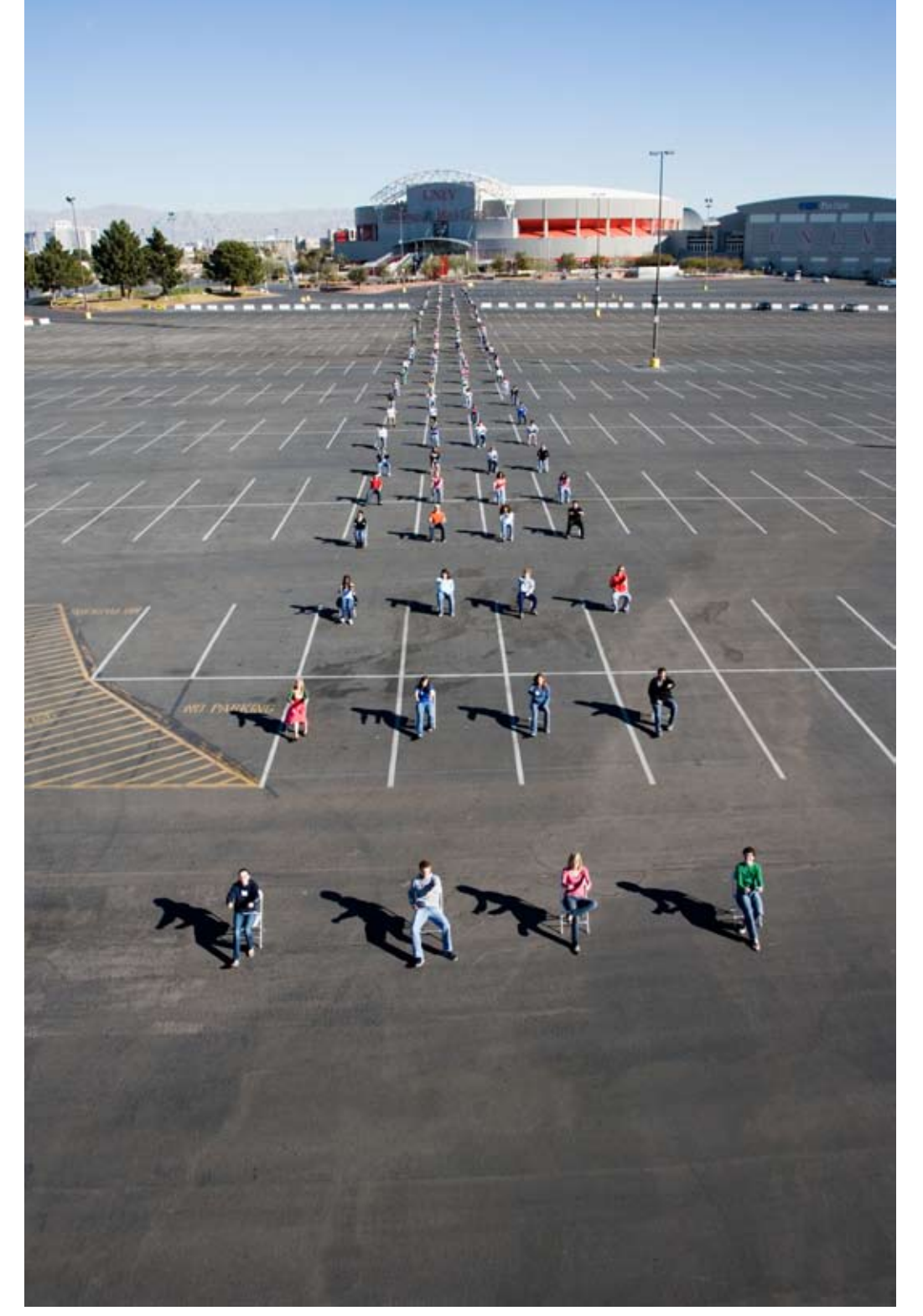


KEY ATTRIBUTES OF RAPID TRANSIT

- Dedicated right-of-way
- Level, platform boarding
- Rapid loading and unloading of vehicles on platforms and using multiple entryways
- Simplified, off-board fare collection
- Less frequent stops with fast travel in between



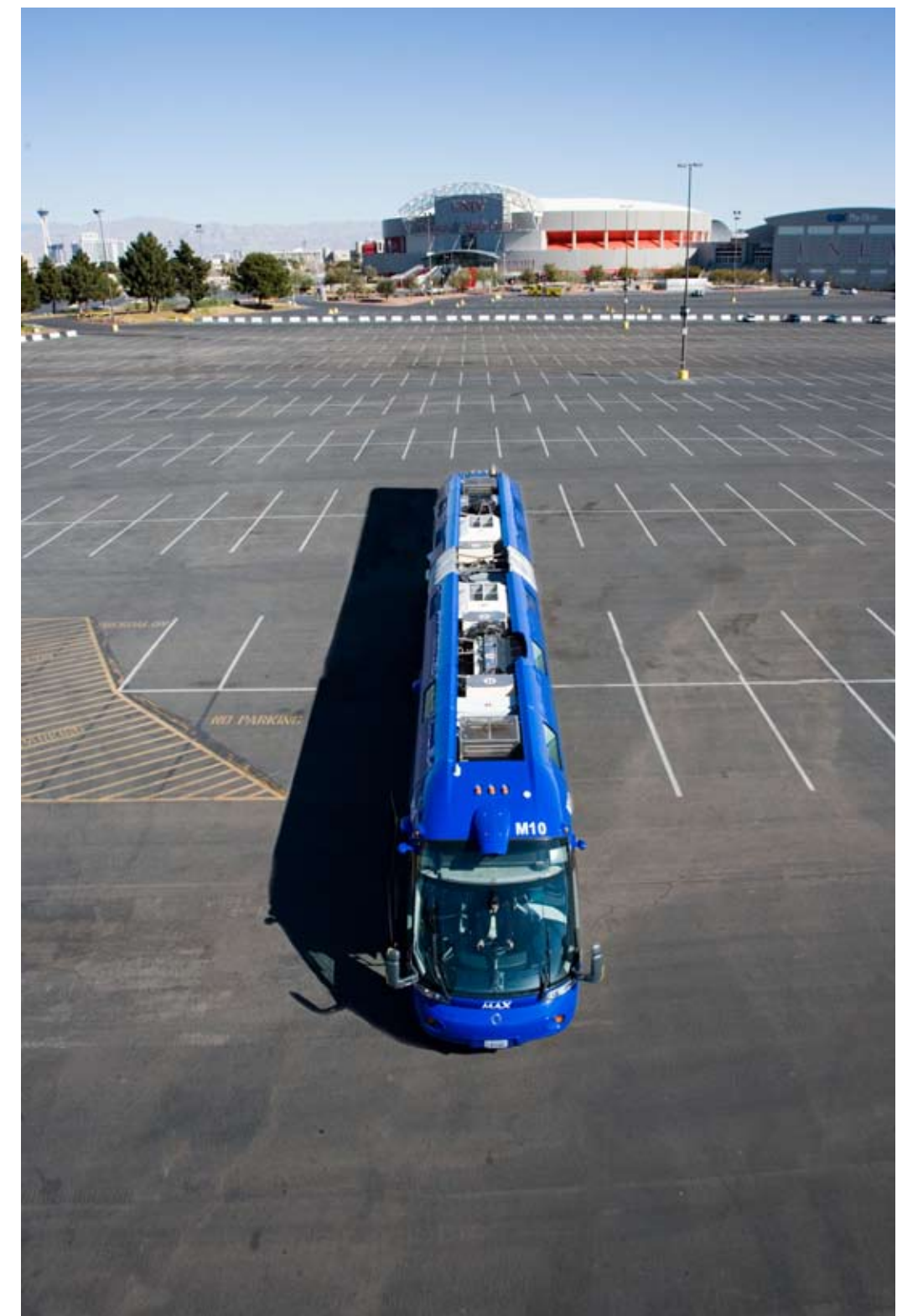
112 Cars



112 Drivers



112 Riders



112 Riders
in a Rapid
Transit Vehicle

